



GRAND GLASS
& HARDWARE LTD

PRODUCT CATAGORY

SHOWER GLASS PANELS

www.grandglass.co.nz

Grand Glass Limited

Grand Glass & Hardware Ltd specializes in delivering premium glass products and services at competitive prices. Our extensive range includes glass balustrades, pool fences, and shower products designed to meet diverse customer needs. With the convenience of New Zealand's first online glass shop, we ensure nationwide accessibility for homeowners, installers, and resellers. Additionally, our in-house installation team stands ready to serve customers in the Auckland region, providing expert installation services.



Category

1. Shower Glass Panels - 10mm Shower Glass Panels

1.1 Hinged Shower Glass	...03
1.2 Sliding Shower Glass	...05
1.3 Walk-in Shower Glass	...07
1.4 Angle Shower Glass	...09

1.1 Hinged Shower Glass

* All glass panel below is 10mm clear toughend glass. For more information, please contact us.

1.1.1 Hinged Shower - Hinge Panel

Code	H	W
1950FH-120	1950	120
1950FH-140	1950	140
1950FH-160	1950	160
1950FH-180	1950	180
1950FH-200	1950	200
1950FH-220	1950	220
1950FH-240	1950	240
1950FH-260	1950	260
1950FH-280	1950	280
1950FH-300	1950	300
1950FH-320	1950	320
1950FH-340	1950	340
1950FH-360	1950	360
1950FH-380	1950	380
1950FH-400	1950	400
1950FH-420	1950	420
1950FH-440	1950	440
1950FH-460	1950	460
1950FH-480	1950	480
1950FH-500	1950	500
1950FH-520	1950	520
1950FH-540	1950	540
1950FH-560	1950	560
1950FH-580	1950	580
1950FH-600	1950	600

1.1.2 Hinged Shower - Door Panel

Code	H	W
1945DA-590	1945	590
1945DA-600	1945	600
1945DA-610	1945	610
1945DA-620	1945	620
1945DA-630	1945	630
1945DA-640	1945	640
1945DA-650	1945	650
1945DA-660	1945	660
1945DA-670	1945	670
1945DA-680	1945	680

1945DB-610	1945	610
1945DB-620	1945	620

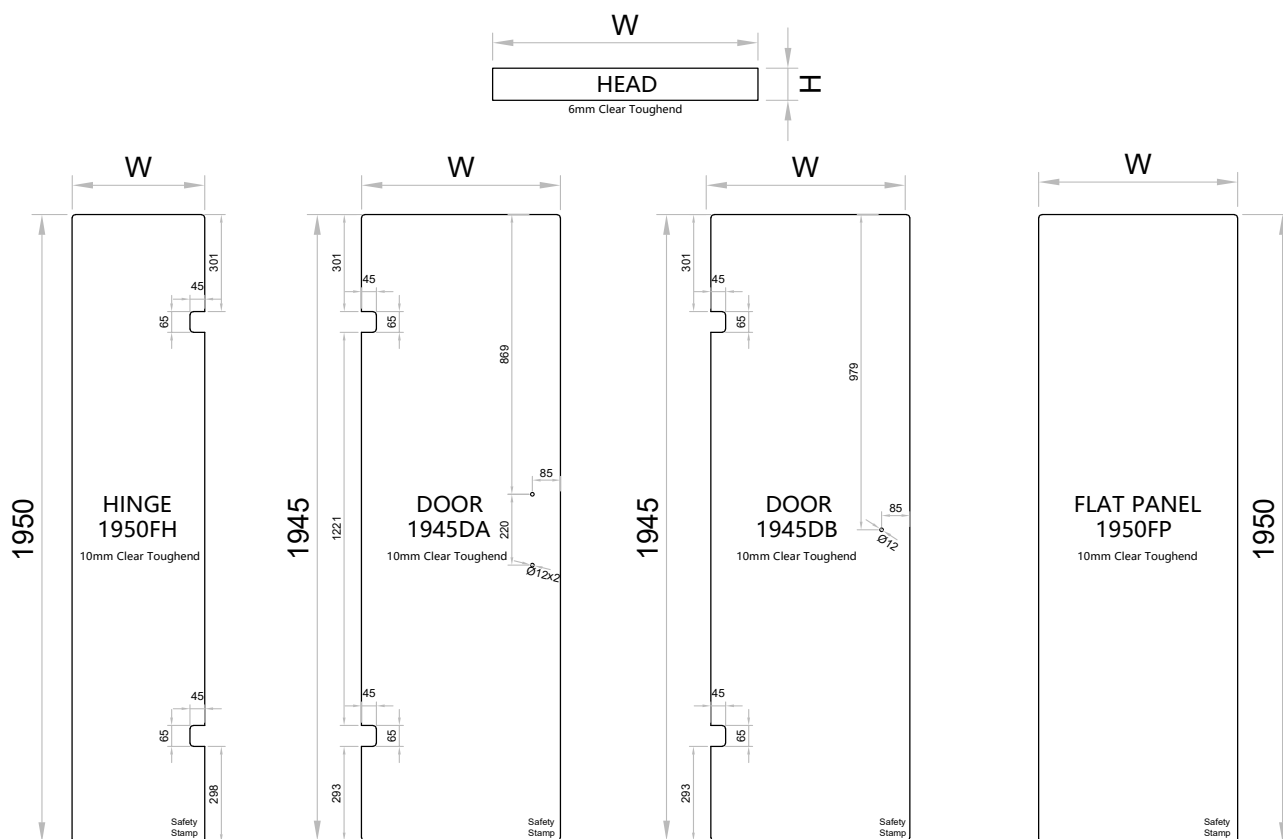
2.1.3 Hinged Shower - Head Panel

Code	H	W
HeadF-750	100	750
HeadF-800	100	800
HeadF-850	100	850
HeadF-900	100	900
HeadF-950	100	950
HeadF-1000	100	1000
HeadF-1050	100	1050
HeadF-1100	100	1100
HeadF-1150	100	1150
HeadF-1200	100	1200
HeadF-1250	100	1250
HeadF-1300	100	1300
HeadF-1350	100	1350
HeadF-1400	100	1400

* Head Panels are 6mm thickness.

2.1.4 Hinged Shower - Flat Panel

Code	H	W
1950FP-110	1950	110
1950FP-130	1950	130
1950FP-150	1950	150
1950FP-170	1950	170
1950FP-190	1950	190
1950FP-210	1950	210
1950FP-230	1950	230
1950FP-250	1950	250
1950FP-270	1950	270
1950FP-290	1950	290
1950FP-310	1950	310
1950FP-625	1950	625
1950FP-650	1950	650
1950FP-675	1950	675
1950FP-700	1950	700
1950FP-725	1950	725
1950FP-750	1950	750
1950FP-775	1950	775
1950FP-800	1950	800
1950FP-820	1950	820
1950FP-840	1950	840
1950FP-860	1950	860
1950FP-880	1950	880
1950FP-900	1950	900
1950FP-920	1950	920
1950FP-940	1950	940
1950FP-960	1950	960
1950FP-980	1950	980
1950FP-1000	1950	1000
1950FP-1050	1950	1050
1950FP-1100	1950	1100
1950FP-1150	1950	1150
1950FP-1200	1950	1200



Detailed Dimension

Various Assembly Possibilities



Hinge Shower - 2 Pcs Door Side



Hinge Shower - 2 Pcs Door Side
(Alcove)



Hinge Shower - 3 Pcs Door Side



Hinge Shower - 3 Pcs Door Side
(Alcove)

Hardware with 6 Designed Finishes



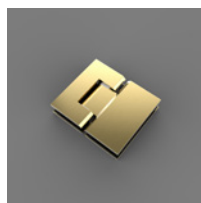
Mirror Finish



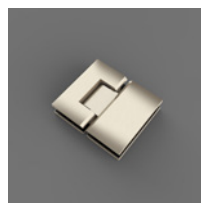
Ceramic White



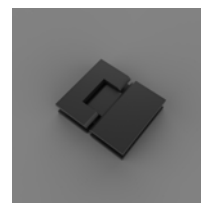
Gun Metal



Brass



Nickel



Matte Black

1.2 Sliding Shower Glass

* All glass panel below is 10mm clear toughend glass. For more information, please contact us.

1.2.1 Sliding Shower - Fixing Panel

Code	H	W
2000FP-650	2000	650
2000FP-750	2000	750
2000FP-850	2000	850
2000FP-950	2000	950
2000FP-1050	2000	1050

1.2.2 Sliding Shower - Door Panel

Code	H	W
1992SD-600	1992	600
1992SD-650	1992	650
1992SD-700	1992	700
1992SD-750	1992	750
1992SD-800	1992	800

1.2.3 Sliding Shower - Return Panel

Code	H	W
2000RP-900	2000	900
2000RP-920	2000	920
2000RP-940	2000	940
2000RP-960	2000	960
2000RP-980	2000	980
2000RP-1000	2000	1000



Sliding Shower - Hardware & Panels

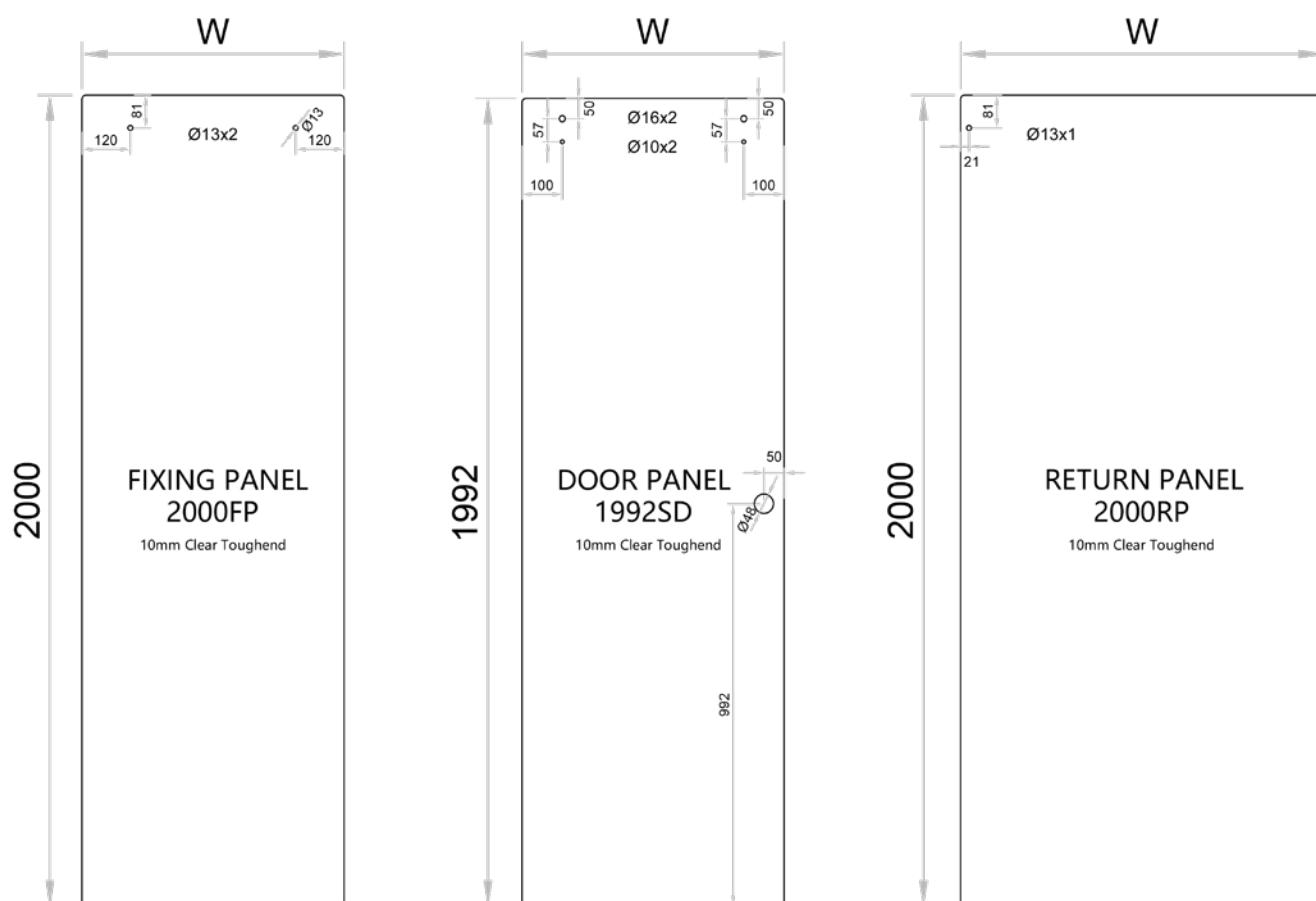
Flexible Assembly



Sliding Shower - Fixing to Return Panel

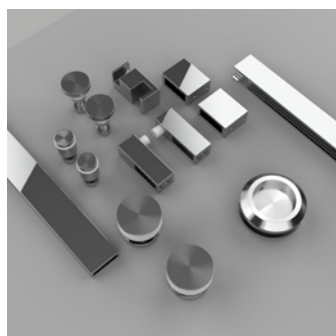


Sliding Shower - Fixing to Wall



Detailed Dimension

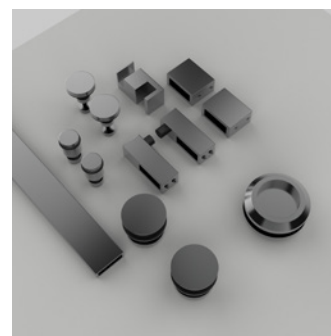
Hardware with 6 Designed Finishes



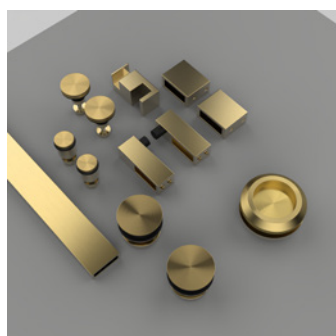
Mirror Finish



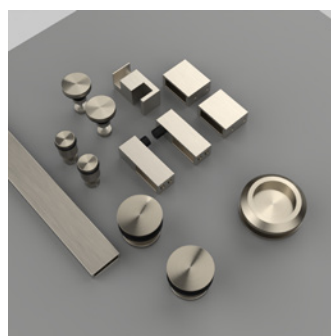
Ceramic White



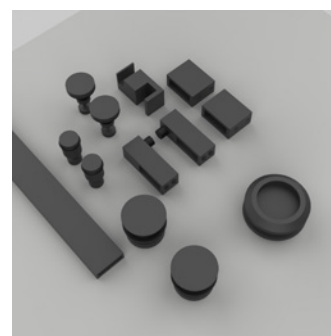
Gun Metal



Brass



Nickel



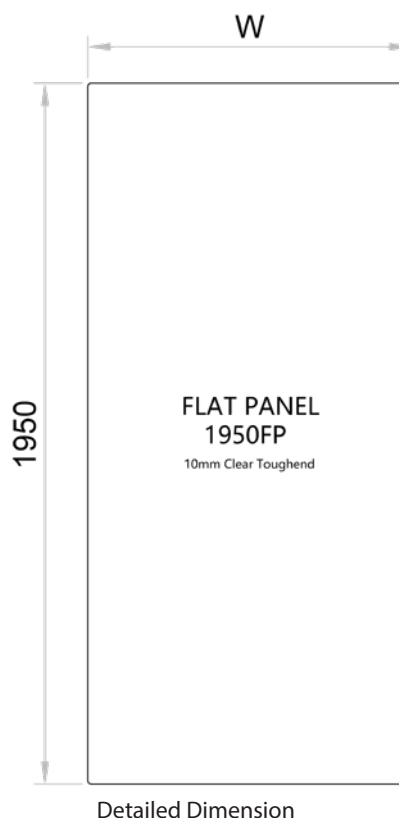
Matte Black

1.3 Walk-in Shower Glass

* All glass panel below is 10mm clear toughend glass. For more information, please contact us.

1.3.1 Walk-in Shower - Flat Panel

Code	H	W
1950FP-110	1950	110
1950FP-130	1950	130
1950FP-150	1950	150
1950FP-170	1950	170
1950FP-190	1950	190
1950FP-210	1950	210
1950FP-230	1950	230
1950FP-250	1950	250
1950FP-270	1950	270
1950FP-290	1950	290
1950FP-310	1950	310
1950FP-625	1950	625
1950FP-650	1950	650
1950FP-675	1950	675
1950FP-700	1950	700
1950FP-725	1950	725
1950FP-750	1950	750
1950FP-775	1950	775
1950FP-800	1950	800
1950FP-820	1950	820
1950FP-840	1950	840
1950FP-860	1950	860
1950FP-880	1950	880
1950FP-900	1950	900
1950FP-920	1950	920
1950FP-940	1950	940
1950FP-960	1950	960
1950FP-980	1950	980
1950FP-1000	1950	1000
1950FP-1050	1950	1050
1950FP-1100	1950	1100
1950FP-1150	1950	1150
1950FP-1200	1950	1200



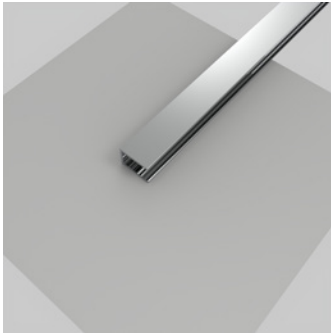
1.3.2 Walk-in Shower - Reeded Ultra Clear Glass

Code	H	W
Reeded Ultra Clear Glass 990	1950	890
Reeded Ultra Clear Glass 890	1950	990
Reeded Ultra Clear Glass 1090	1950	1090

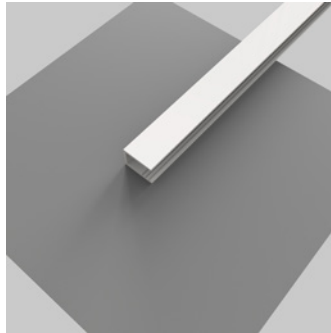


Walk-in Shower - Reeded Ultra Clear Glass

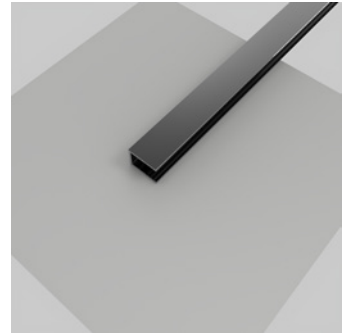
Hardware with 6 Designed Finishes



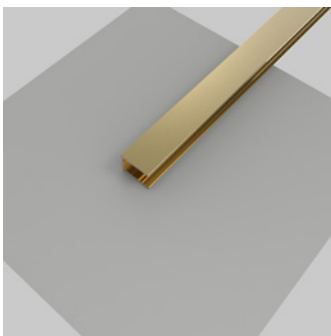
Mirror Finish



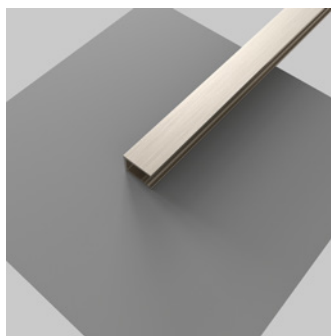
Ceramic White



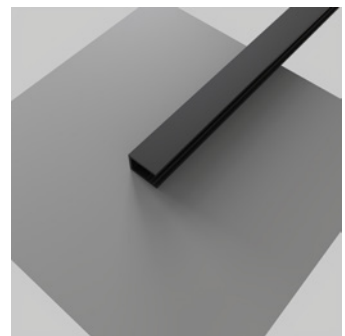
Gun Metal



Brass



Nickel



Matte Black

Different Assembly Possibilities



Walk-in Shower
Gun Metal Channel
Flat Panel



Walk-in Shower
Nickel Channel
Reeded Ultra Clear Glass



Walk-in Shower
Matte Black Channel
Flat Panel

1.4 Angle Shower Glass

* All glass panel below is 10mm clear toughend glass. For more information, please contact us.

1.4.1 Angle Shower - Hinge Panel - 45° Bevel Edge

Code	H	W
1950BH-380	1950	380
1950BH-400	1950	400
1950BH-420	1950	420
1950BH-440	1950	440
1950BH-460	1950	460
1950BH-480	1950	480
1950BH-500	1950	500
1950BH-520	1950	520
1950BH-540	1950	540
1950BH-560	1950	560
1950BH-580	1950	580
1950BH-600	1950	600

1.4.2 Angle Shower - Door Panel

Code	H	W
1945DA-590	1945	590
1945DA-600	1945	600
1945DA-610	1945	610
1945DA-620	1945	620
1945DA-630	1945	630
1945DA-640	1945	640
1945DA-650	1945	650
1945DA-660	1945	660
1945DA-670	1945	670
1945DA-680	1945	680

1945DB-610	1945	610
1945DB-620	1945	620



Angle Shower

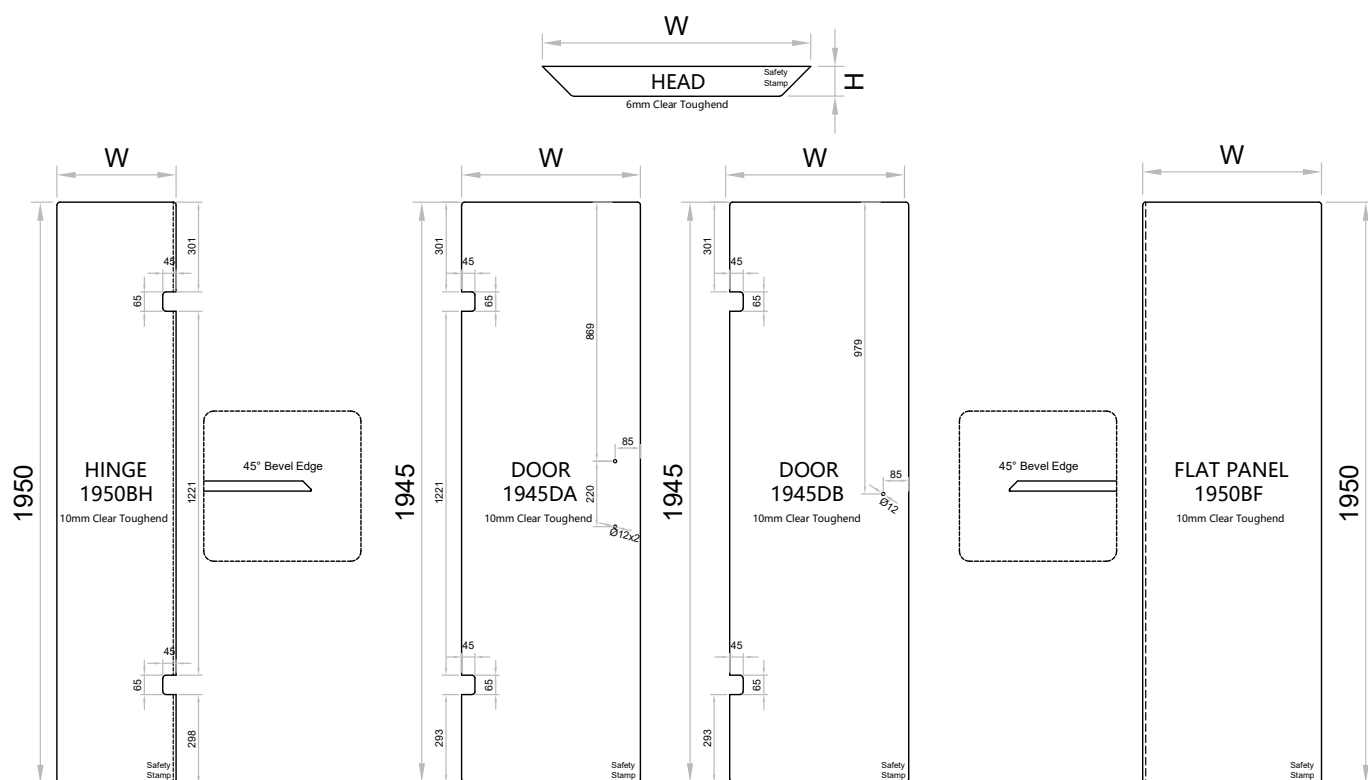
1.4.3 Angle Shower - Flat Panel - 45° Bevel Edge

Code	H	W
1950BF-380	1950	380
1950BF-400	1950	400
1950BF-420	1950	420
1950BF-440	1950	440
1950BF-460	1950	460
1950BF-480	1950	480
1950BF-500	1950	500
1950BF-520	1950	520
1950BF-540	1950	540
1950BF-560	1950	560
1950BF-580	1950	580
1950BF-600	1950	600

1.4.4 Angle Shower - Head Panel

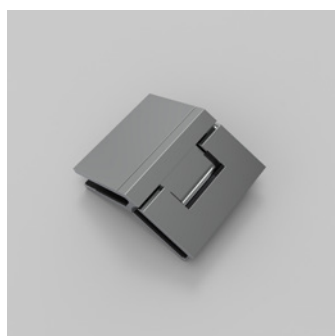
Code	H	W
HeadB-800	100	800
HeadB-810	100	810
HeadB-820	100	820
HeadB-830	100	830
HeadB-840	100	840
HeadB-850	100	850
HeadB-860	100	860
HeadB-870	100	870
HeadB-880	100	880

* Head Panels are 6mm thickness.

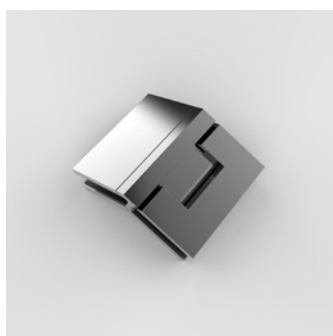


Detailed Dimension

Hardware with 4 Designed Finishes



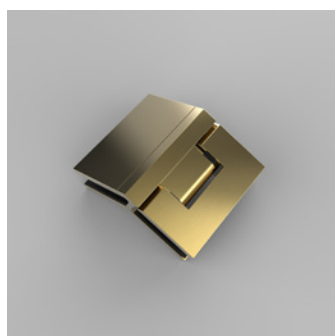
Mirror Finish



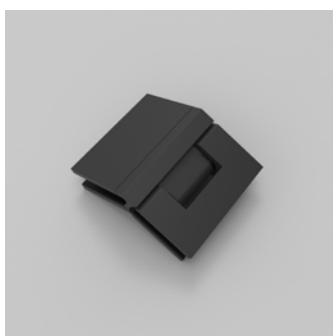
Gun Metal



Nickel



Brass



Matte Black



Get in Touch

Email: sales@grandglass.co.nz

Web: www.grandglass.co.nz

Ph: 09 478 9778

18 Parkway Drive, Rosedale, Auckland.

